

Scavenger Hunt- Fun Facts about Our Garden!

| | | |
|---|---|---|
| <p>Check the water level on the water tank tube. How full is the tank?</p> <p>_____</p> <p>Bonus: What is another name for the water tank?</p> <p>_____</p> | <p>Find and name 1 or 2 fruits growing in the garden now.</p> <p>1. _____</p> <p>2. _____</p> <p>(Hint: Don't forget to look at the trees.)</p> | <p>Find a weed, pull it with the weeding tool, and remember to get the root!</p> <p>Put it in the trash bin.</p> |
| <p>Name 3 things plants need to grow.</p> <p>1. _____</p> <p>2. _____</p> <p>3. _____</p> | <p>Find a "baby plant" from your class garden bed.</p> <p>Bonus: What is a baby plant called?</p> <p>_____</p> | <p>A balanced nutritious meal includes proteins, grains, _____ and _____.</p> |
| <p>Find a dead leaf on the ground. Where are dead grass and leaves collected in the garden and why?</p> | <p>What do the Red Wiggler worms in the worm bins eat?</p> <p>_____</p> <p>_____</p> | <p>Name at least one way seeds travel or spread.</p> |
| <p>Find a piece of trash and put it where it belongs!</p> | <p>What is a chrysalis? And where could you find one?</p> <p>_____</p> <p>_____</p> | <p>What is milkweed? And should we get rid of it because it is called a weed?</p> |

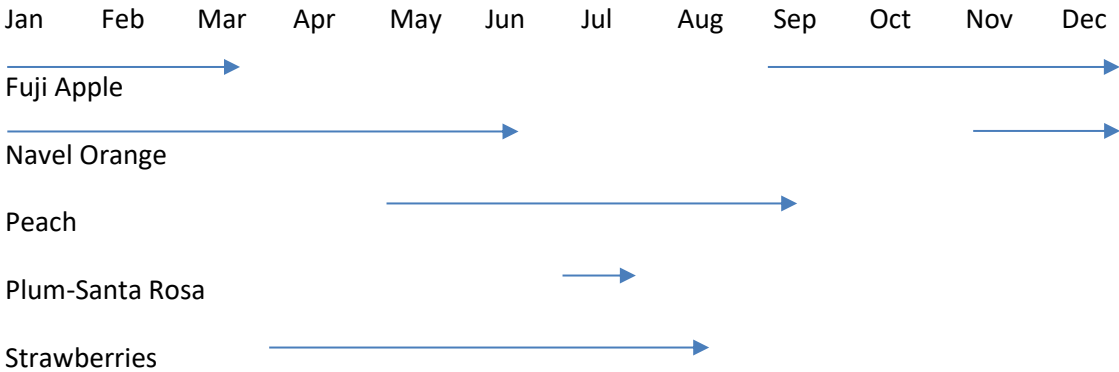
Scavenger Hunt – Fun Facts about Our Garden! ANSWERS

| | | |
|---|---|---|
| <p>Check the water level on the water tank tube. About how full is the tank?</p> <p>_____</p> <p>Bonus: What is another name for the water tank?</p> <p><u>Cistern</u> _____</p> | <p>Find and name 1 or 2 fruits growing in the garden now.</p> <p>1. _____</p> <p>2. _____</p> <p>(Hint: Don't forget to look at the trees.) <i>See notes below for which fruits are likely in your current month.</i></p> | <p>Find a weed, pull it with the weeding tool, and remember to get the root!</p> <p>Put it in the trash bin.</p> |
| <p>Name 3 things plants need to grow.</p> <p>1. _____</p> <p>2. _____</p> <p>3. _____</p> <p>Six components total are needed: Seed, soil, space, water, air,</p> | <p>Find a “baby plant” from your class garden bed.</p> <p>Bonus: What is a baby plant called?</p> <p><u>Sprout</u> _____</p> | <p>A balanced nutritious meal includes proteins, grains, _____ <u>Fruits</u> _____ and _____ <u>Vegetables</u> (and dairy).</p> <p>See https://www.choosemyplate.gov/MyPlate</p> |
| <p>Find a dead leaf on the ground. Where are dead grass and leaves collected in the garden and why?</p> <p><i>Hot compost bins; mixture decomposes, make nutrient rich new soil. Please do not put anything into the composting bins, which are carefully monitored by the composting teams.</i></p> | <p>What do the Red Wiggler worms in the worm bins eat?</p> <p><i>Most fruits/veggies, but NOT citrus fruits (oranges, grapefruits, limes, lemons, tangerines, etc.). Worms do NOT eat meat, dairy, bread, grains, salad dressing, ketchup, mustard, mayo, sweets or vinegar. Important for the worm composters to know when they are collecting food to feed the worms.</i></p> | <p>Name at least one way seeds spread or travel.</p> <p><i>Hitchhike (stick to fur, feather, clothing or shoes and inside animals who eat them), drop (show the sycamore seed balls), pop, fly (show the milkweed seeds- picture below), float on water, gardener. See How Seeds Travel below for further details.</i></p> |
| <p>Find a piece of trash and put it where it belongs!</p> | | |

| | | |
|--|--|---|
| | <p>What is a chrysalis? Where could you find one?</p> <p><i>The pupa stage of a butterfly. We see the hardened outer shell of the pupa, but we don't see the metamorphosis going on inside.</i></p> <p><i>Butterfly garden</i></p> <p><i>FYI: The stages of a butterfly life cycle: Egg, caterpillar, pupa, adult.</i></p> | <p>What is milkweed? Should we get rid of it because it is called a "weed"?</p> <p><i>Milkweed is a plant that is the <u>only</u> food source for the Monarch butterfly.</i></p> <p><i>Don't get rid of it! If you destroy it, there will be no more Monarch butterflies!</i></p> |
|--|--|---|

Fruits growing in our garden now

See the garden map below – yellow circles.



When these fruit trees “go into season”, it means they are bearing fruit.

Apples – depending upon the variety, can harvest Aug/Sept/Oct

<http://www.pickyourown.org/apples.htm>

<http://www.calapple.org/media/files/Apple.facts.pdf>

Fuji – Sept to March, ripest in mid to late October – the apple tree growing near the fence next to the kindergarten playground (upper left corner of the map below) is a Fuji apple tree

Orange – year around depending upon the variety;

Sunkist website: http://www.sunkist.com/products/variatal_chart.aspx

Sunkist website says:

Navel – November to June- our garden’s orange tree is a Navel, in the Touch and Smell Garden

Valencia – February to October

Cara Cara Navel – December to May

Moro – December to Mid-April

Peaches – depending upon the region of the U.S.

California – Early May to early September

<http://www.eatlikenoone.com/when-does-peach-season-begin-and-end.htm>

Plum – blooms summer/fall; harvest July

Santa Rosa Plum (variety in the TMA Garden) – many blossoms in May and ready to harvest in July

<http://homeguides.sfgate.com/santa-rosa-plum-tree-information-61675.html>

Strawberries – April through August

In California, because of the climate, they can be harvested throughout the year

http://www.californiastrawberries.com/about_strawberries

“In Oxnard and Santa Maria districts, plantings in late July through September provide strawberries through fall and winter.”

How Seeds Travel

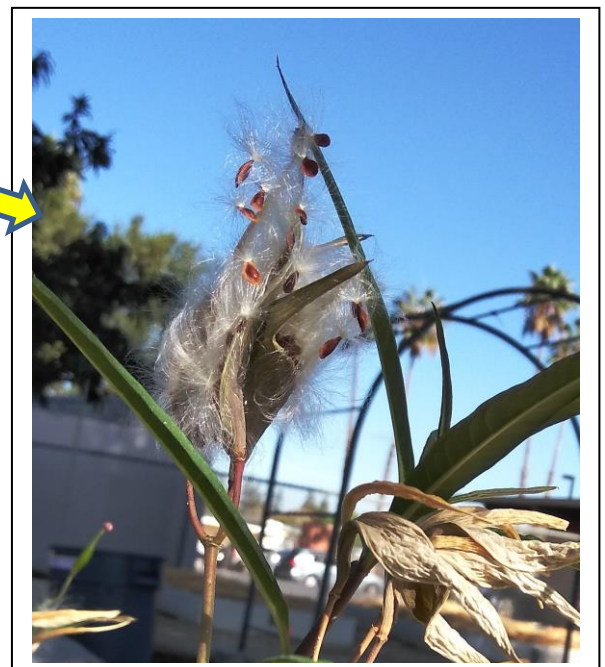
<http://www.kidsdiscover.com/parentresources/seed-dispersal/>

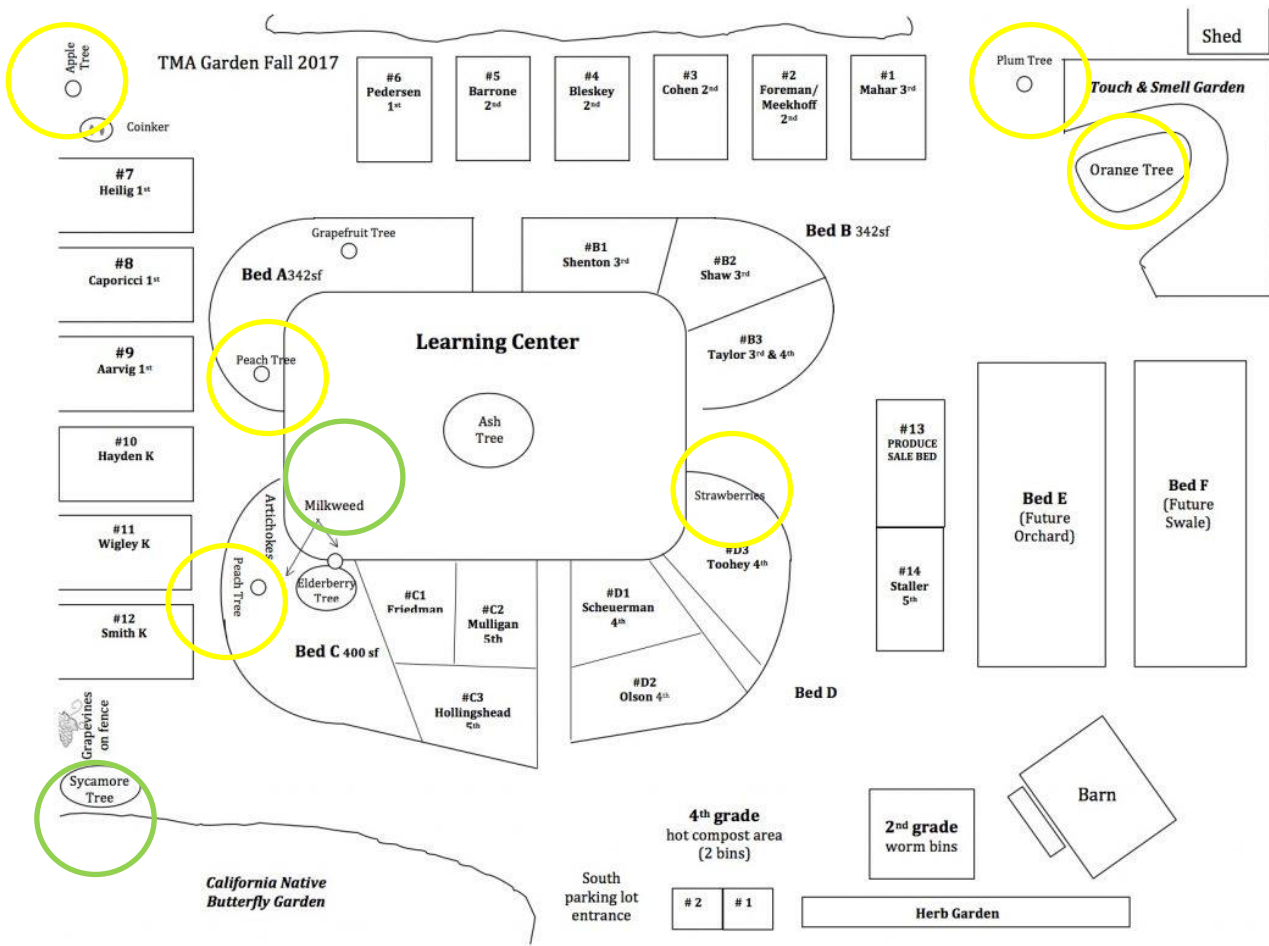
<http://www.oconeeriversaudubon.org/node/4>

- Hitchhikers – stick to fur, feather, clothing (shoes too), and inside animals (poop)
- Droppers- fall to the ground and animals carry them away.
 - The Sycamore tree (see map below) drops its seed balls – the 1-inch diameter prickly “balls”
- Poppers- burst from seed pods and disperse from the plant
- Flyers- carried through the air by wind
 - TMA Milkweed plant
 - Dandelions
- Floaters- carried away in water
- Gardeners- purposely plant seeds

<http://tomatosphere.org/teachers/guide/principal-investigation/seeds-germination>

Tomato seeds can survive the digestive tract





TMA Garden Map

Yellow circles – Fruit trees

Green circles – Seeds that fly (milkweed) and drop (sycamore tree)